



Anniversary door

Now save over 25%**



Anniversary garage door
MicroMatic 75
 in 6 colours,
 incl. operator only

£ 1,275*

Hörmann's anniversary
 competition!

Sectional garage door MicroMatic 75

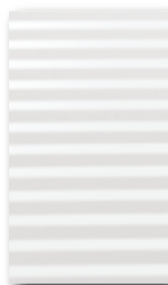
With a smooth, finely-profiled Micrograin surface,
incl. a Hörmann garage door operator ProMatic,
 identical to Hörmann's double-skinned, insulated
 sectional garage door EPU.

In 4 campaign sizes:

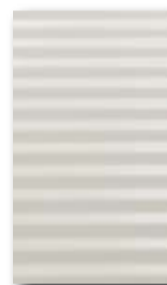
7'0" x 7'0" (2134 x 2125), 7'6" x 6'6" (2286 x 2000),
 7'6" x 7'0" (2286 x 2125), 8'0" x 7'0" (2438 x 2125).

Other door sizes available in an L-ribbed LPU 40 version
 with Micrograin surface.

Exclusive door design in 6 colours at no surcharge



Traffic white
 RAL 9016



Light grey
 RAL 7035



White aluminium
 RAL 9006



Anthracite grey
 RAL 7016



Fir green
 RAL 6009



Terra brown
 RAL 8028

Take a chance:
**Hörmann is giving
 away** **75** anniversary
 doors!

Celebrate Hörmann's anniversary with us and win:
 In honour of its 75th anniversary, Hörmann is giving away
 75 special MicroMatic 75 doors. It is easy to enter: Just fill
 in the coupon and turn it in to your local Hörmann dealer.
 If you win a door, but require a different size for your garage,
 the value of your anniversary door will be deducted from
 the purchase price.

Take a chance! Good luck!

Yes, I would like to win a
 MicroMatic 75 anniversary
 door from Hörmann.

Deadline for entries: 31. 12. 2010.

My address:

Surname, name

Street, house number

Post code, town

Hörmann KG may use my personal data for this contest, as well as for market research and advertising
 purposes. I understand that this consent may be revoked at any time.

*Recommended retail price for the campaign sizes incl. 17.5% VAT. Valid for all participating dealers in the United Kingdom until 31.12.2010.
 **In comparison with an LPU door with the same door style and surface.

Legal recourse is excluded. The 75 anniversary doors will be awarded throughout Europe. Hörmann employees and their relatives are not eligible.
 The prize may not be paid out as cash payment.



Anniversary prices make modernisation



Entrance door
RenoDoor 75
only
£1,275*

Sectional garage door
RenoMatic 75
incl. operator only
£1,275*

Save up to
25%*

Decograin surface advantages

- Natural timber character
- High noise and thermal insulation
- No follow-up painting necessary
- No warping

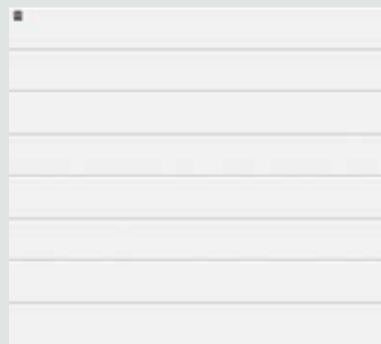
Sectional garage door RenoMatic 75

Incl. Hörmann garage door operator **ProMatic**, identical to Hörmann's double-skinned, insulated sectional garage door EPU.
In 4 campaign sizes:
7'0" x 7'0" (2134 x 2125), 7'6" x 6'6" (2286 x 2000),
7'6" x 7'0" (2286 x 2125), 8'0" x 7'0" (2438 x 2125).
Other door sizes available in the M-ribbed LPU 40 version with the same surface.

Entrance door RenoDoor 75

Identical to Hörmann ThermoPro entrance doors with aluminium frames in the **campaign size 920 x 2095 mm**, depth 46 mm. Other door sizes are available on request.

4 high-quality surfaces all at a special anniversary price



Silkgrain surface in white

Garage door in white Silkgrain, entrance door in aluminium painted white. Thanks to its elegant appearance, the silky-smooth Silkgrain surface is particularly suited for modern architecture.



Decograin surface in Golden Oak

Steel garage door and entrance door in Decograin Golden Oak. With an embossed grain, this UV-resistant surface conveys a realistic timber look.



Decograin surface in Titan Metallic

Steel garage door and entrance door in Decograin Titan Metallic. The UV-resistant surface has an elegant and exclusive appearance – similar to the Hörmann colour CH 703.



Decograin surface in Dark Oak

Steel garage door and entrance door in Decograin Dark Oak. With an embossed grain, this UV-resistant surface looks and feels like real dark oak timber.



n even more fun



Up-and-over door
Pearl 75
only
£475*

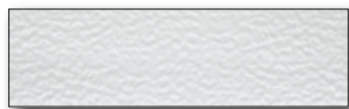
Entrance door
RenoDoor 75 light
only
£775*

Save up to
25%**

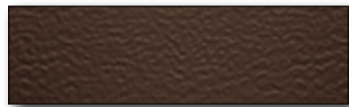
Up-and-over door Pearl 75

With a structured Pearlgain surface
in 2 equally-priced colours.

In campaign sizes:
7'0" x 6'6" (2134 x 1981),
7'0" x 7'0" (2134 x 2134).



Traffic white RAL 9016



Terra brown RAL 8028

Entrance door RenoDoor 75 light

Identical to Hörmann ThermoPro entrance doors with aluminium frames in 2 equally-priced colours and in the campaign size 920 x 2095 mm, depth 46 mm. Other door sizes are available on request.



Traffic white RAL 9016



Terra brown RAL 8028

Online information and planning



www.hormann.co.uk

Information for builders and modernisers: Everything on garage doors, operators, entrance doors and other Hörmann products.

Garage door operator Turbo 75

- 575 N push and pull force for doors with up to max. 11 m² door surface
- Up to 33% faster opening in comparison with conventional operators
- Incl. operator boom (K)



Including a radio code switch FCT 3b



Including an internal push button IT 1b



Including 2 mini hand transmitters HSM 4



Garage door operator Turbo 75
incl. radio code switch, internal
push button and 2 hand
transmitters only
£375*

Safe door operation



A reliable automatic safety cut-out immediately stops the door if there is an obstacle.

Secure door locking



Automatic door locking is break-in-resistant and, in comparison to conventional door operators, works even in the event of a power failure. Patented by Hörmann!

Save over
35%**

*Recommended retail prices for the campaign sizes or products incl. 17.5% VAT. Valid for all participating dealers in the United Kingdom until 31.12.2010. End consumer price in the country incl. VAT without fitting.
**With the RenoMatic 75, in comparison with an LPU door with the same door style and surface. With the RenoDoor 75 and RenoDoor 75 light in comparison with a ThermoPro entrance door with the same style and surface. With the Pearl 75, in comparison with a Series 2000, 2001 up-and-over door. With the Turbo 75 compared to ProMatic P with identical accessories.



You're certain to save with our anniversary prices



Entrance door TopSecur 75

Identical to TopPrestige entrance doors, **in a break-in-resistant WK2 version**, with aluminium infill overlapping the leaf on the exterior, 80 mm frame profile, stainless steel handle, glass: exterior sand-blasted safety glass with clear stripes, interior laminated safety glass (P4). Stainless steel embellishments on the interior and exterior. **Door sizes up to 1250 x 2250 mm with custom dimensions at no surcharge.**

Side element TopSecur 75

In a break-in-resistant WK2 version, with design glass infill. Glass: exterior sand-blasted safety glass with clear stripes, interior laminated safety glass (P4). **Side element sizes up to 600 x 2250 mm with custom dimensions at no surcharge.**



Entrance door **TopSecur 75** in WK2 version only

£ 2,675*

Side element **TopSecur 75** in WK2 version, each only

£ 1,175*

Save up to **25%****

In 4 high-quality surfaces all at a special anniversary price



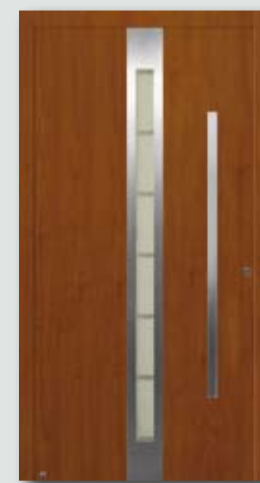
Traffic white RAL 9016.



Elegant textured paint in the Hörmann colour CH 703, Anthracite, interior in white.



Chestnut coloured textured paint in the Hörmann colour CH 607, interior in white.



Decograin Golden Oak with the authentic appearance of real timber, interior in white.

WK2 safety package for all Hörmann TopComfort, TopPrestige and TopPrestigePlus entrance doors, side elements and transom lights each only

£ 275*

surcharge

Another reason to be happy: Hörmann's safety package is also available at a special anniversary price

All Hörmann TopComfort, TopPrestige and TopPrestigePlus aluminium entrance doors, side elements and transom lights are available in our tested, break-in-resistant WK2 version for a surcharge of only £275. Hörmann is the only one that can provide you with complete WK2 entrance door systems, consisting of an entrance door, side element and transom light.



Only from Hörmann

Hormann main UK Specialist dealer:

**The Garage Door Centre Ltd
Freephone (0800) 525442**

www.thegaragedoorcentre.co.uk

*Recommended retail price for the indicated door/side element sizes or the WK2 safety package incl. 17.5% VAT. Valid for all participating dealers in the United Kingdom until 31.12.2010.
End consumer price in the country incl. VAT without fitting.
**In comparison with a TopPrestige entrance door 686 TP in WK2 version.